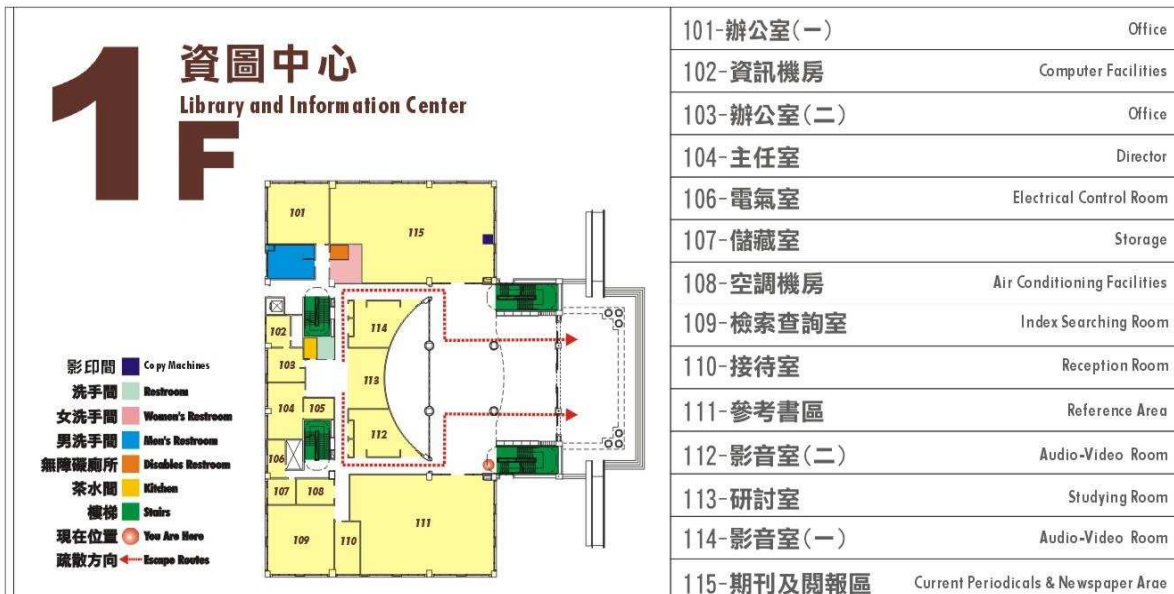
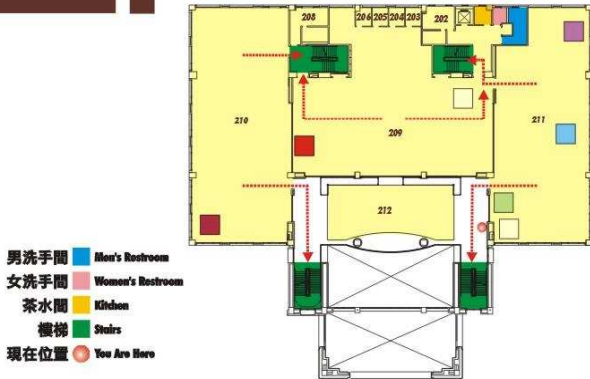


率真總館平面圖

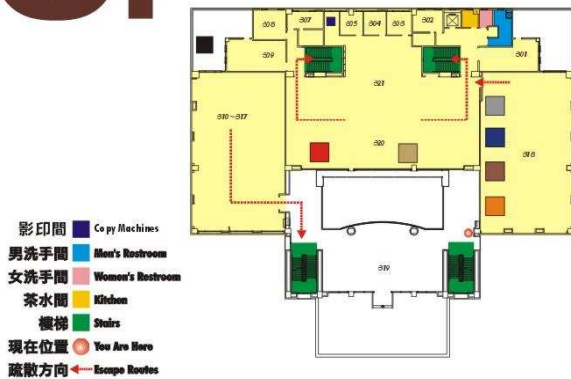


2F 資圖中心 Library and Information Center



202-資訊機房	Computer Facilities
203-206-研究小間	Personal Research Room
208-電氣室	Electrical Control Room
209-211-書庫區	General Collection
■ 500-社會科學類	Social Sciences
■ 600-本國史地類	History and Geography; China
■ 700-外國史地類	History and Geography; World
■ 800-語文類	Language and Literature
■ 900-藝術類	Arts
212-閱覽區	Reading Area

3F 資圖中心 Library and Information Center



301. 309-空調機房	Air Conditioning Facilities
302. 307-電氣室	Electrical Control Room
303-305-討論室	Meeting Room
308-儲藏室	Storage
310-317-視聽室	Audio and Video Room
318. 320-書庫區	General Collection
■ 100-哲學類	Philosophy
■ 200-宗教類	Religions
■ 300-自然科學類	Natural Sciences
■ 400-應用科學類	Applied Sciences
■ 西文書庫區	Western Collections
■ 001-總類	Generalities
319-閱覽區	Reading Area
321-輿圖區	Maps Area